



PennState

Environmental Health and Safety

**Earth and Engineering Science
Emergency Evacuation Plan
Penn State University**

Emergency Phone Numbers

EMERGENCY (Police-Fire-Ambulance) 911

University Police (814) 863-1111

University Health Services (814) 865-6556

Environmental Health and Safety (814) 865-6391

Physical Plant Work Reception Center (814) 865-4731

Emergency Evacuation Plan Building and Personnel Information

Building Name: **Earth and Engineering Sciences Building**

Position	Name	Area of Responsibility	Phone Office/Cell	Office Address
Building/Department Emergency Coord.	Marty Gutowski	Earth & Engineering Sciences Building	863-9071 and 983-7086	419 EES
Alternate Building/Department Emergency Coord.	Brandon Forsythe	Earth & Engineering Sciences Building	865-0294 907-250-6314	2217 EES
Unit Safety Officer	Frank Driscoll	College of Earth and Mineral Sciences	867-2499	512B Barron Innovation Hub
Unit Alternate Safety Officer	Diane Ault	College of Earth and Mineral Sciences	865-7659	510 Barron Innovation Hub
Safety Monitors				
1 st Floor	Tam Rankin	1 st Floor Classrooms	865-1073	2217 EES
1 st Floor (alternate)	Abby Benkiran		863-7091	2217 EES
2 nd Floor	BrandonForsythe	2 nd Floor	865-0294	2217 EES
2 nd Floor (alternate)	ShellyMcCall	2 nd Floor	867-0168	2217 EES
3 rd Floor	Katerina Kostadinova	3 rd Floor	863-8104	316 EES
3 rd Floor (alternate)	Bernd Haupt		865-8188	317C EES
4 th Floor	Marty Gutowski	4 th Floor	863-9071 and 883-7086	419 EES
4 th Floor (alternate)	Mark Wherley	4 th Floor	863-2073	420 EES

Designated Meeting Site(s) for Earth and Engineering Sciences Building:

Good Weather – all parties for EMS are to meet on the sidewalk intersection at the base of WestGate bridge. All parties for Engineering are to meet at NW corner of parking lot near the Golf Course.

Inclement Weather - Inside west lobby area of WestGate (directions: walk up the exterior WestGate bridge, heading towards campus, use first door on the left to enter designated lobby area.

Updated 6/10/2022

Designated Areas of Refuge for the Building are: All floors of EES, east stairwell landing areas (closest to WESTGATE building)

Designated Outside Area of Refuge: West lobby area of WESTGATE.

Copies of this Evacuation Plan are kept in the following locations:

EESB Door Monitors – Abby Benkiran, Tam Rankin

EESB Door Monitors (alternates): Shelly McCall, Berndt Haupt, Tao Wen

Critical Operations Shut Down Procedures and Personnel Assigned These Responsibilities (None at this time.)

Provide the following information:

- Critical Operation
- Required Shutdown
- Name
- Job Title
- Work Area

Marty Gutowski/Brandon Forsythe
Signature of Plan Preparer

6/10/22
Date Prepared

Work Unit Employee Lists

EESI Building

Roster for EMS

Date: August 2019

Building	Room #	Last Name	First Name	Affiliation
EES	217			
EES	217B	Barlow	Erica	Postdoc
EES	217B	Soares	Georgia	Postdoc
EES	217C	Murphy	Thomas	Faculty
EES	217D	Balashov	Victor	Faculty
EES	217D	Lebedeva	Marina	Faculty
EES	217E			
EES	217F			
EES	217F			
EES	218			
EES	218A	Kertis	Susan	Staff
EES	218B	House	Chris	Faculty
EES	219	Kostadinova	Katerina	Staff
EES	221	Forsythe	Brandon	Faculty
EES	222	White	Tim	Faculty
EES	224			
EES	225A	Rankin	Tam	Staff

Updated 6/10/2022

EES	225B	Taylor	Alan	Faculty
EES	225C	Zemba	Cas	Staff
EES	226A	McCall	Michele	Staff
EES	226B	Blehi	David	Staff

EES	226C			
EES	226C			
EES	226D	Kostadinova	Katerina	Staff
EES	313	Canich	Tom	Staff
EES	314	Shamory	Todd	Staff
EES	315	Buechler	Jeff	Staff
EES	316	Miley	John	Staff
EES	317A	Yoxtheimer	Dave	Faculty
EES	317C	Haupt	Bernd	Faculty
EES	317D	Crawford	Steve	Staff
EES	317E			
EES	317F	Niu	Xianzeng	Faculty
EES	317G	Nicholas	Robert	Faculty
EES	318A	Yengbe	Emefa (Abena)	Staff
EES	318B	Silvis	Virginia	Postdoc
EES	319A	Sharkey	Sarah	Faculty
EES	319A			
EES	319B	Helgeson	Casey	Faculty
EES	319B			
EES	319C	Mahmud	Suhail	Postdoc
EES	319C			
EES	320			
EES	320A			
EES	320B	Kimmig	Julien	Staff
EES	320C	Lisk	Matt	Staff
EES	320C	Sharma	Sanjib	Postdoc
EES	415	Sankey	Haley	Faculty
EES	415	Robinson	Brandi	Faculty
EES	416	Spaugh	Sue	Staff
EES	417	Capparelle	Noelle	Staff
EES	418	Packer	Angela	Staff
EES	418A	Taylor	Ann	Faculty/Admin
EES	418B	Vancas	Tina	Staff
EES	419	Gutowski	Marty	Staff
EES	420	Rocco	Stevie	Faculty
EES	421	Wherley	Mark	Staff
EES	421A	Wherley	Maria	Staff

Updated 6/10/2022

EES	422	Croyle	Matt	Staff
EES	422	Auker	Zachary	Staff
EES	422A	Schaad	Carl	Staff
EES	422A	Sporre	Heidi	Staff
EES	423	Park	Funsung	Grad Student
EES	423	Millet	April	Faculty
EES	424	Kohler	Megan	Faculty
EES	425	Bacastow	Todd	Faculty
EES	426	Crossman	Kim	Staff

EES	426	DiMarco	Kay	Staff
EES	428	Seman	Steve	Faculty
EES	429			
EES	430	Robinson	Anthony	Faculty
EES	431	Suarez	Marcella	Faculty
EES	432	Zeiders	Michelle	Faculty
EES	433	Gaertner	Brandi	Faculty
EES	434	Thomas	Gregory	Faculty
EES	435	Giannakis	Panagiotis	Faculty
EES	437	Detwiler	James	Faculty
EES	438	King	Beth	Faculty

Listing of Individuals Requiring Evacuation Assistance

Provide the following information:

- Name
- Work Area
- Special Needs/Concerns

None at this time

Updated 6/10/2022

Building Evacuation Floor Plans



EVACUATION ROUTE



- ← Exit Route
- Fire Alarm
- Fire Extinguisher
- Assisted Evacuation Staging Area

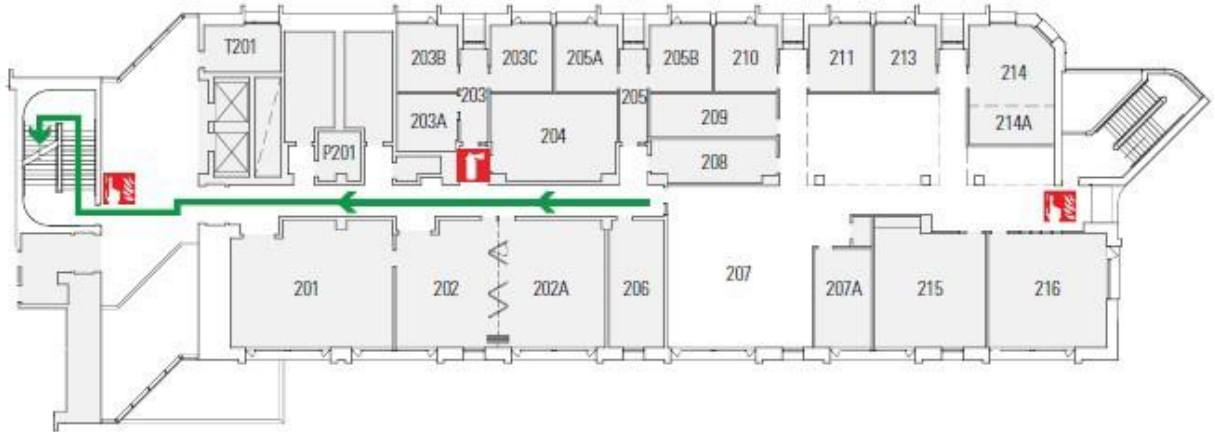
DESIGNATED MEETING SITE
NW corner of parking lot near
golf course



Earth and Engineering Sciences Bldg - 1st Floor



EVACUATION ROUTE



- Exit Route
- Fire Alarm
- Fire Extinguisher
- Assisted Evacuation Staging Area

DESIGNATED MEETING SITE
NW corner of parking lot near
golf course



Earth and Engineering Sciences Bldg - 2nd Floor



EVACUATION ROUTE



- ← Exit Route
- Fire Alarm
- Fire Extinguisher
- Assisted Evacuation Staging Area

DESIGNATED MEETING SITE
IST Bridge



Earth and Engineering Sciences Bldg - 3rd Floor



EVACUATION ROUTE



- ← Exit Route
- Fire Alarm
- Fire Extinguisher
- Assisted Evacuation Staging Area

DESIGNATED MEETING SITE
IST Bridge



Earth and Engineering Sciences Bldg - 4th Floor

Evacuation Quick Reference Card

Emergency Contacts:

911 (Police- Fire –Ambulance)
University Police: 863-1111
Environmental Health and Safety: 865-6391
OPP Work Reception Center: 865-4731

Evacuation Contacts:

Bldg / Dept Emergency Coordinator:
Marty Gutowski
Safety Monitor: Brandon Forsythe

Work Unit Name

Evacuation Quick Reference
- Quickly exit in a calm manner.
- Close doors – **Do Not** lock
- Assist visitors to evacuate
- **Do Not** use elevators
- Report to designated meeting site
- **Do Not** reenter the building until advised by
emergency personnel or safety monitor

Building Name designated meeting site:
WESTGATE RAMP